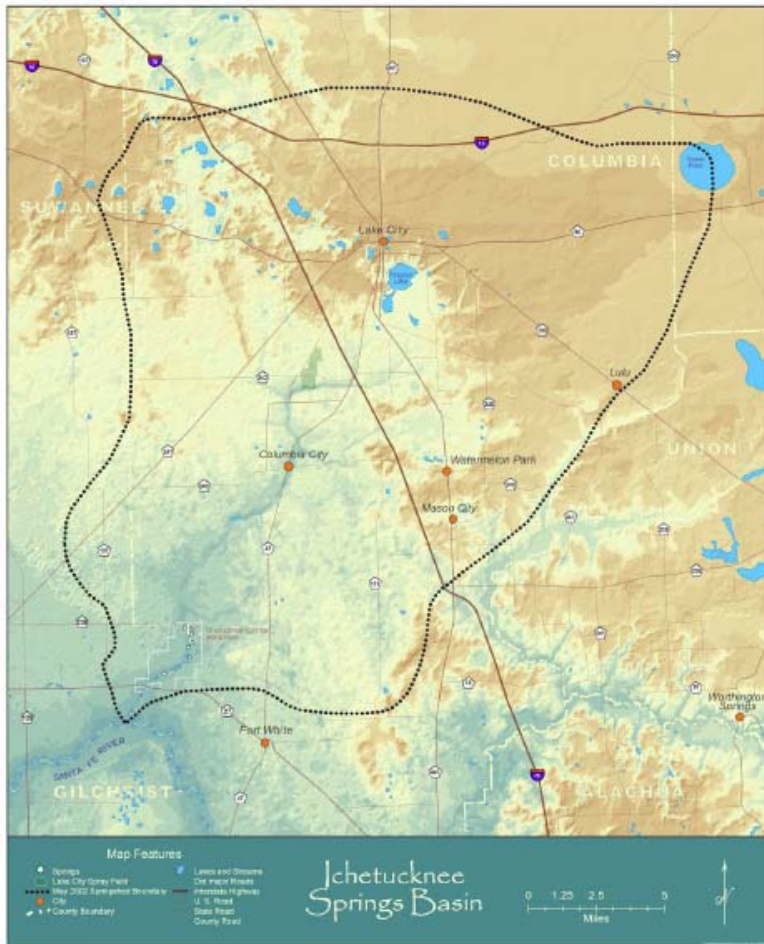


## The Ichetucknee River

The Ichetucknee is an amazing natural wonder. The river is fed by a group of springs that create a beautiful, crystal clear river that eventually flows into the Santa Fe River. People come from all over the world to float the sparkling water through the wooded flood plain in the Ichetucknee Springs State Park. The river is full of submerged aquatic vegetation and abundant wildlife. Manatees are often spotted in the less traveled sections of the Ichetucknee.



The river flows six miles through shaded hammocks and wetlands before it joins the Santa Fe River. In 1972, the head spring of the river was declared a National Natural Landmark by the U. S. Department of the Interior. The various springs along the shores are a great place to rest and enjoy the beauty of natural Florida.

The average flow of the Ichetucknee River is about 360 cubic feet per second. The main springs that make up the Ichetucknee Group are: Ichetucknee Head Spring, Blue Hole Spring, Mission Springs, Devil's Eye Springs, Grassy Hole Springs, Mill Pond Springs and Coffee Spring.



Manatee and calf – Ichetucknee River

[http://mysuwanneeriver.com/resources/tom\\_ichsprs\\_handoutsm1.pdf](http://mysuwanneeriver.com/resources/tom_ichsprs_handoutsm1.pdf)  
(go to the site & download the pdf, to see a bigger version of the map)

Water quality in the Ichetucknee is rapidly declining. Because of this **Save Our Suwannee** has participated in numerous educational events in Lake City. The goal is to make residents aware that what we do on the land—in our homes, lawns, gardens, golf courses and farms—affects the waters of the Ichetucknee. We provide tools to help individuals make “springs friendly” changes to lawn care and septic maintenance. If everyone would make these simple changes, the water quality problems in the Ichetucknee could be reversed.

For more information on Ichetucknee Springs:

Ichetucknee Springs Working Group

<http://www.ichetucknee.info/>

Florida Geological Survey Report on the Ichetucknee River

[http://www.flmnh.ufl.edu/springs\\_of\\_florida/ichetucknee.html](http://www.flmnh.ufl.edu/springs_of_florida/ichetucknee.html)

Science is Protecting the Ichetucknee

<http://www.floridasprings.org/protection/success/ichetucknee/>

Real time USGS River Level Gage ICHETUCKNEE R @ HWY27 NR HILDRETH, FL

[http://waterdata.usgs.gov/fl/nwis/uv/?site\\_no=02322700&PARAMeter\\_cd=00065,00060](http://waterdata.usgs.gov/fl/nwis/uv/?site_no=02322700&PARAMeter_cd=00065,00060)

Other Links:

Activists news on Ichetucknee

<http://www.ichetucknee.org/springs.html>

Trouble on the Ichetucknee – Tallahassee Democrat Article

<http://www.tallahassee.com/apps/pbcs.dll/article?AID=/20060619/NEWS01/606190304/1010>

Ichetucknee Springs State Park

<http://www.floridastateparks.org/ichetuckneesprings/>